

## SAILING INSTRUCTIONS

### 2009 IWA Junior, Youth & Masters Windsurfing World Championships *An International Windsurfing Association sanctioned event*

Weymouth and Portland National Sailing Academy, Great Britain  
22nd to 29th August 2009

#### 1. RULES

- 1.1. The regatta will be governed by the rules as defined in *The Racing Rules of Sailing* (RRS 2009-2012) Windsurfing Competition Rules.
- 1.2. No national authority prescription will apply.
- 1.3. If there is a conflict between languages, the English text will prevail.
- 1.4. Personal buoyancy is mandatory for all competitors under 18 years of age. Failure to comply will result in a 5 point penalty, for each infringement, being implemented by the Race Committee without a hearing. **This changes RRS 63.1.**

#### 2. FORMAT

- 2.1. Boys and Girls in the TWC under 15 division (E) shall race together.
- 2.2. Boys and Girls in the TWC under 17 division (D) shall race separately.
- 2.3. Boys in the TWC under 17 division (D) shall race a qualifying and final series.
- 2.4. Boys and girls in the Techno Open division shall race together.
- 2.5. Divisions D and E in the TWC shall race separately.
- 2.6. Men and Women in the RYWC shall race together.
- 2.7. Men and Women in the RMWC shall race together.

#### 3. NOTICES TO COMPETITORS

- 3.1. Notices to competitors will be posted on the Official Notice Board (ONB), located in the Event Hall.

#### 4. CHANGES TO SAILING INSTRUCTIONS

- 4.1. Any change to the sailing instructions shall be posted, after approval of the Class Representative, on the Official Notice Board 1 hour before the scheduled start of racing on the day that it takes effect, except that any change to the schedule of races shall be posted before 20.00 hours on the day before it will take effect.

#### 5. SIGNALS MADE ASHORE

- 5.1. Signals made ashore will be displayed on flagpole beside the Beachmaster's hut. When a signal is displayed over Class/Division/Group flag it applies to that Class/Division/Group only.
- 5.2. **"AP" flag** displayed ashore means '1 minute' is replaced with - 'not less than 30 minutes'. **This changes RRS Race Signals.**
- 5.3. **"Y" flag** displayed ashore means: "All competitors, coaches and support crew personnel shall wear their personal flotation device. Rule 40 applies at all times while afloat." **This changes RRS Part 4 preamble.**
- 5.4. **"G" flag** (with one sound signal) means: "The safety system (as described in SI.18) is in force.
- 5.5. **"D" flag** (with one sound signal) displayed ashore means: "The warning signal will be made not less than 30 minutes after Flag D is displayed or not before the scheduled start time, whichever is later". Boards shall not leave their allocated berth until this signal is made.

#### 6. SIGNALS MADE AFLOAT

- 6.1. **"R" flag** means: "A rescue operation is in progress. Coach and other support boats shall collaborate with the race committee in rescue tasks".

#### 7. SCHEDULE OF RACES

- 7.1. The Racing Schedule is as specified in the Notice of Race.
- 7.2. The warning signal for a subsequent race on the same day will be made as soon as practicable, except that the minimum interval between the closing of the *finishing line* and the new warning signal for that class/division will be 10 minutes. After a long postponement and/or to alert boards that a race or sequence of races will begin shortly, an Orange flag will be displayed (with one sound signal) for at least FOUR minutes before a warning signal is displayed.
- 7.3. If two races have been sailed back to back there shall be a rest period of a minimum of one hour

ashore for the last finisher per class/division in the second race, before the warning signal for a third race.

## 8. CLASS/DIVISION/GROUPS AND FLAGS

- 8.1. Classes / Divisions / Groups and their flags are described in Attachment 1.
- 8.2. The Under 17 Boys Division will race a qualifying series and a final series in two groups.
  - 8.2.1 For the first day the groups will be assigned in National letter and sail number order.
  - 8.2.2 The qualifying series will be a maximum of 6 races and a minimum of 4 races in the first 3 racing days. If fewer than 4 races have been completed by both groups at the end of the 3rd day the qualifying series will be extended to the 4th day and the 5th and 6th day if necessary. Groups will be reassigned each evening on overall standing.
  - 8.2.3 At the end of the qualification series an overall standing will be established, if racing in the final series is not possible this standing shall count as the official result.
  - 8.2.4 The final series will be sailed in gold and silver groups.
  - 8.2.5 Boards will be assigned to the white/gold group or the green/silver group.

## 9. RACING AREA

- 9.1. The Racing Areas are shown in Attachment 2. A coloured flag will designate each racing area: ALPHA – orange; BRAVO – blue.
- 9.2. The course area is defined as an area extending 75 metres beyond the course including the "starting line" and the "finishing line" and the extensions, which would normally be taken by a racer when racing.

## 10. COURSES

- 10.1. The diagrams in Attachment 3 show the courses, including the course signals, the approximate angles between legs, the order in which marks are to be passed, and the side on which each mark is to be left.
- 10.2. Mark 3 is shown as a gate, 3s and 3p, and mark 4 is shown as a gate, 4s and 4p. One or both gates may be replaced by single marks, Mark 3 and Mark 4 respectively, to be left to port. When there is a gate, boards shall sail between the gate marks from the direction of the previous mark and round either gate mark.
- 10.3. No later than the warning signal, the race committee signal boat will display the course to be sailed.

## 11. MARKS

- 11.1. The marks of the course are inflatable buoys as shown in Attachment 3. Those on Course A will be Orange and those on Course B will be Blue
- 11.2. The starting marks will be the race committee signal boat at the starboard end and another race committee boat at the port end. Both boats will display orange flags.
- 11.3. Finishing marks will be race committee boats or dan buoy. Boats and dan buoy will display orange flags

## 12. THE START

- 12.1. Races will be started according to RRS 26.
- 12.2. The starting line will be between staffs displaying orange flags on the race committee boats.
- 12.3. Boats whose warning signal has not been made shall avoid the starting area. Failure to comply with RRS 23.3 will result in a 5 point penalty being implemented by the Race Committee in the next race in which they are due to sail. In the case of the last race in the series, the penalty will apply to the penultimate race. The penalty shall be applied without a hearing. **This changes RRS63.1.**
- 12.4. A boat starting later than 4 minutes after her starting signal will be scored Did Not Start. **This changes RRS A4 and A5.**
- 12.5. The interval between the Starting signal of one class/division and the Warning signal of the next class/division will be at the discretion of the Race Committee.
- 12.6. When an individual recall has been signalled, the sail numbers of the identified competitors will only be posted on the race committee signal boat before the first boat has finished that race. Failure to display the sail numbers will not be grounds for redress. **This changes RRS 62.1(a) and A5.**
- 12.7. When a General recall has been signalled, the succeeding start(s) for the same and/or for different class (s) / division(s) will be given according to the flags hoisted on the race committee boat and according to the RRS 29.2.

## 13. THE FINISH

- 13.1. The finishing line will be between staffs displaying orange flags on the race committee boats or a dan buoy. The approximate position of the finishing line is shown in Attachment 3.
- 13.2. When conditions are unfavourable, the finishing line race committee boats may hold position by using engines, and accordingly this is not grounds for redress. **This changes RRS 60.1(b).**

## 14. PENALTY SYSTEM

- 14.1. RRS 44.1 and 44.2 shall apply.

14.2. A board that has taken a penalty or retired under RRS 44.1 shall complete an acknowledgement form at the Race Office within the protest time limit of her group. Failure to follow this procedure may lead the Protest Committee to consider the penalty as not executed. **This changes RRS 44.**

## 15. TIME LIMITS & TARGET TIMES

15.1. The time limits and target times are as follows:

Class	Target time	Time limit	Mark 1 time limit	Time limit after the first board
Techno 293	30 min	60 min	20 min	20 min
Raceboard	30 min	60 min	20 min	20 min

15.2. If no board has passed mark 1 within the Mark 1 time limit, the race will be abandoned.

15.3. Boards failing to sail the course and finish within "Time limit after the first board" in that class/division, will be scored Did Not Finish. **This changes RRS 35 and A4 and A5.**

## 16. PROTESTS & REQUESTS FOR REDRESS

16.1. Protest forms are available in the Race Office and shall be lodged there within Protest Time Limit.

16.2. For each class/division the Protest Time Limit is 60 minutes after the last board has finished the last race of the day. The Protest time limit will be posted on the Official Notice Board.

16.3. Notices will be posted within 30 minutes of the protest time limit to inform competitors of hearings in which they are parties or named as witnesses. And the approximate time of the hearings. Parties are requested to remain in the vicinity of the Jury Room to expedite hearings. Hearings will be held in the Jury Room.

16.4. For the purpose of RRS 64.3(b), the qualified authority is the Class Representative.

16.5. Breaches of RRS 23.3 and SI's 1.4, 18, 19, 22 and 23 shall not be subject for a protest by a board. **This changes RRS60.1(a).** Penalties for these breaches may be less than disqualification if the jury so decides.

16.6. To request correction of an alleged error in posted race or series results, a board may complete a "Scoring Enquiry Form" available at the Race Office. Only if the response given by the Race Committee is unsatisfactory in the opinion of the competitor should he request a hearing under RRS 62.

16.7. On the last day of the regatta a request for reopening a hearing shall be delivered:

16.7.1 Within the protest time limit if the party requesting reopening was informed of the decision on the previous day;

16.7.2 No later than 30 minutes after the party requesting reopening was informed of the decision on that day. **This changes RRS 66.**

16.8. On the last scheduled day of racing a request for redress based on jury decision shall be delivered no later than 30 minutes after the decision was posted. **This changes RRS 62. 2.**

16.9. An International Jury will be appointed in accordance with RRS 91 (b) and Appendix N. Decisions of the International Jury will be final as provided in RRS 70.5.

16.10. Competitors wishing to retire from a race shall make a retirement declaration at the Race Office.

## 17. SCORING

17.1. Scoring will be in accordance with RRS Appendix A and RRS A4 "Low Points Scoring System".

17.2. Three races are required to be completed to constitute a series.

17.3. Discards:

17.3.1 When fewer than 4 races have been completed, a board's series score will be the total of her race scores.

17.3.2 When from 4 to 10 races have been completed, a board's series score will be the total of her race scores excluding her worst score.

17.3.3 When 11 or more races have been completed, a board's series score will be the the total of her race scores excluding her two worst score.

17.3.4 **This changes RRS A.2.**

## 18. SAFETY REGULATIONS

18.1. Retire:

18.1.1 A board that retires from a race shall, whenever possible, notify a race committee boat before leaving the course area. Not with standing such notification, she shall then proceed, as soon as possible, to the beach and the competitor shall immediately report to the Race Office, in person or, if the competitor has come ashore a long way from the race site, by phoning the Race Office. Failure to comply with this instruction may result in action under RRS 60.2 or 60.3.

18.1.2 Competitors not going afloat for the day's racing shall inform the Beach Office prior to the first start.

18.2. Safety System:

18.2.1 The Safety System is in force when the "G" flag is displayed on the "Official Flag Pole".

- 18.2.2 Sign-out/in sheets will be provided, by the Race Committee, outside the Beachmaster's hut.
- 18.2.3 Each competitor, intending to race, shall personally sign-out, against his name/sail number, when going out to race.
- 18.2.4 When returning ashore each competitor shall personally sign in to confirm that he/she has returned to shore:
- 18.2.4.1 Within 30 minutes of the end of the time limit of that race, or in the case of back to back races the last race of that class/division for the day.
- 18.2.4.2 Within 30 minutes after being instructed to go ashore by the Race Committee.
- 18.3. This system applies also if SI 7.3 will be in use.
- 18.4. Failure to comply with SI 18.2.3 or 18.2.4 will result in a 5-point penalty being implemented by the Race Committee, without a hearing. **This changes RRS 63.1.**
- 18.5. The board's penalty score under SI 18.4 shall be reduced to a 2-point penalty if:
- 18.5.1 A competitor who has not signed out reports to the starting vessel before the Warning signal of the first start of the period for his/her Class/Division.
- 18.5.2 A competitor who has not signed in according to SI 18.2.4 reports to the Race committee before the end of protest time for his/her Class/Division.
- 18.6. The board's penalty score shall include each infringement of SI 18 (Safety System) and shall be added to that race score

## 19. REPLACEMENT OF EQUIPMENT

- 19.1. Race Committee vessel(s), displaying "**F**" flag carrying spare equipment, may be located, below the course, in the vicinity of the starboard end of the starting line. Failure of such boats to be on station or to be able to offer replacement equipment shall not be grounds for redress under RRS 62.
- 19.2. Substitution of damaged or lost equipment limited by the class rules will not be allowed without the approval of the race committee. Request for substitution shall be made at the first reasonable opportunity.
- 19.3. **Changing Rigs.** When changing to a rig with a different size sail, the crew must obtain the new rig and return the old rig at the same time to the equipment storage area.

## 20. EQUIPMENT INSPECTION

- 20.1. It is the competitor's responsibility to ensure a completed Equipment Registration Form is signed by event Equipment Inspector before registration closes.
- 20.2. The Official Equipment Inspector shall stamp all equipment a competitor intends to use during the regatta before registration closes.
- 20.3. Competitors shall ensure that Equipment is maintained to comply with her Class Rules, as amended by the international class, and published in an official notice on the class website and on the ONB.
- 20.4. The equipment inspectors may conduct checks & inspections of equipment, at any time during the regatta. Identified competitors, at sea, shall sail their boards to the 'equipment inspector's boat, immediately after finishing the race. All competitors, notified of the requirement to be inspected shall follow the instructions of the crew of the equipment inspector's boat and proceed directly to the equipment inspection area, ashore. Until permission is given by the equipment inspector, a selected board shall have no contact with a coach or support personnel, no person shall join or leave the board and no equipment or other item shall be taken on board or off board that board. A competitor, so notified, shall not leave the equipment inspection area, without the permission of the equipment inspectors.

## 21. OFFICIAL BOATS

- 21.1. Race Committee boats shall display a flag corresponding to the colour of that Racing Area.
- 21.2. Other official boats may include:
- 21.2.1 The equipment inspector's boat will fly a white flag with "MEASURER".
- 21.2.2 The Jury boat will fly a white flag with "JURY".
- 21.3. Media boats are not under the direct control of the Race Committee. However, they are required to keep clear. Their failure to do so is grounds for redress, whether there is physical damage or not (**This changes RRS 62.1 (b)**). Media boats are identified by a white flag with "MEDIA".
- 21.4. One boat displaying "**F**" flag may be located, below the course, in the vicinity of the starboard end of the starting line. Competitors may place their life jackets, bags and water, if clearly labelled, in this boat. No responsibility can be accepted for personal belongings not collected before going ashore. Failure of such boats to be on station shall not be grounds for redress under RRS 62.

## 22. SUPPORT BOATS

- 22.1. Coach and support personnel may use support boat to assist their competitors on the water. They shall register at the Race Office prior to the first scheduled race, providing details of their boats and distinctive identification. Support boats shall be kept in their assigned places in the harbour.
- 22.2. All teams support boats shall conspicuously display the national flag of their country of origin (min 600 x 400 mm) or the national 3 letter code in black (min. height 120mm) on a white

background while afloat.

- 22.3. When a support boat is supporting competitors, from more than one nation and is registered as such, they shall be required to display only one national flag or a 3-letter code.
- 22.4. Before the Preparatory Signal of any class/division, support craft shall have left the course areas and remain outside the area, except to assist a crew in distress or at the request of the race committee, until after the finish of the last competitor of the final class/division racing or the races are postponed or abandoned.
- 22.5. If a support boats fails to comply with this SI, all competitors supported by that boat, shall be subject to a 5-point penalty for the next race, without a hearing. In the case of the last race of the series, the penalty will apply to the penultimate race. **This changes RRS 63.1.**

### **23. ELECTRONIC EQUIPMENT, COMPASSES & GPS**

- 23.1. Electronic equipment and compasses are prohibited, with the exception of devices whose sole capability is timing and heart rate monitors.

### **24. PRIZES**

- 24.1. Prizes will be awarded according to the NOR.
- 24.2. All competitors and coaches are reminded to attend at the prize giving and closing ceremony. Prize winners not attending may forfeit their prize.

## **Attachment 1 Classes and Divisions**

### **COURSE A**

Raceboard Youth      Division flag    Light blue flag with Raceboard logo

Raceboard Master      Division flag    White flag with Raceboard logo

T293 Open              Division flag    Red flag with Raceboard logo

### **COURSE B**

T293 Under 15 boys and girls    Division flag    Light blue flag with Techno logo

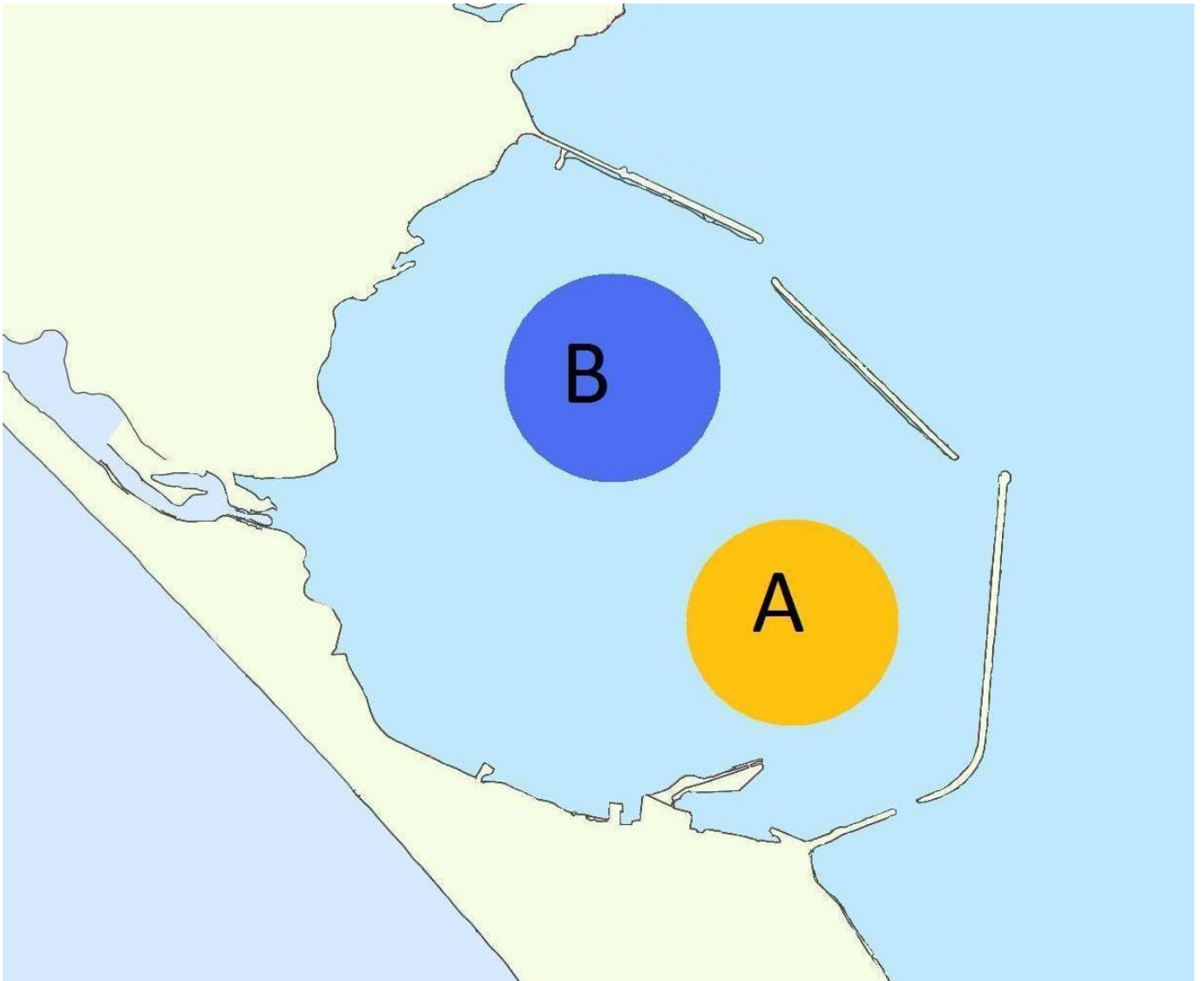
T293 Under 17 girls                      Division flag    Red flag with Techno logo

T293 Under 17 boys      WHITE FLEET      Division flag    White flag with Techno logo

GREEN FLEET              Division flag    Green flag with Techno logo

## Attachment 2

### Race areas



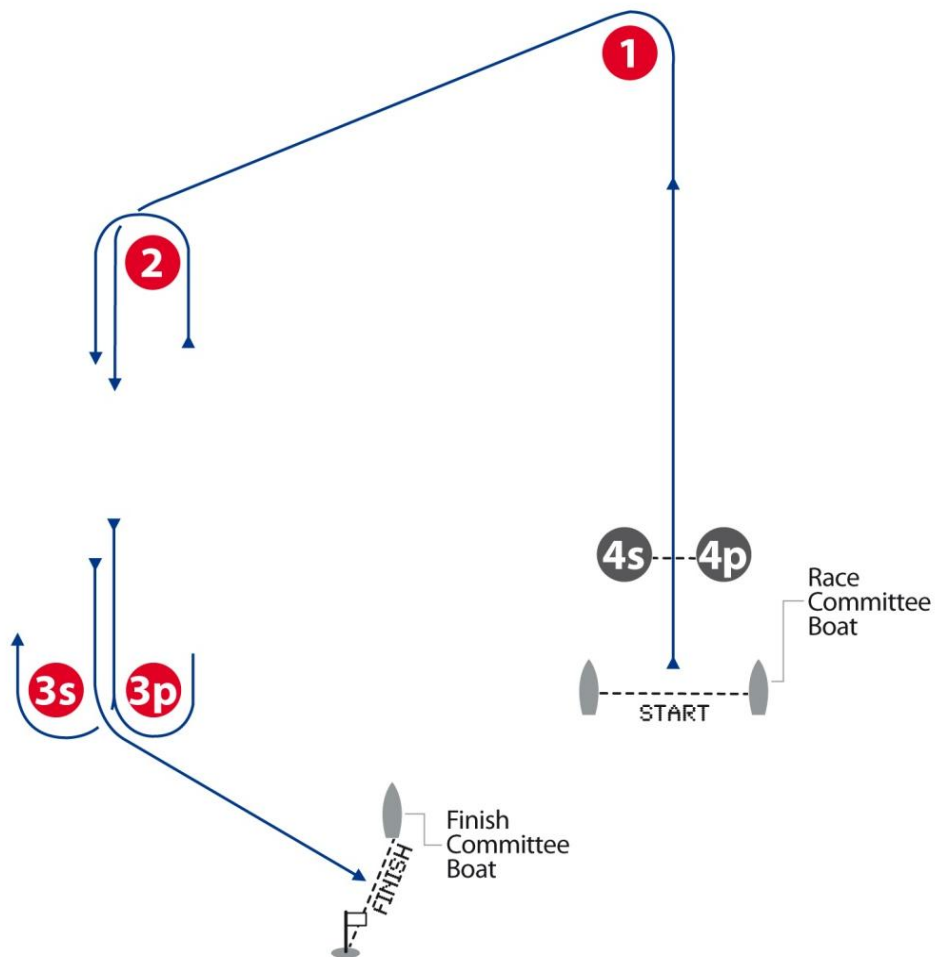
# Attachment 3 – Course Diagrams

## Attachment 3 – Course Diagrams

### Attachment 3-1

#### Course: Trapezoid Outer

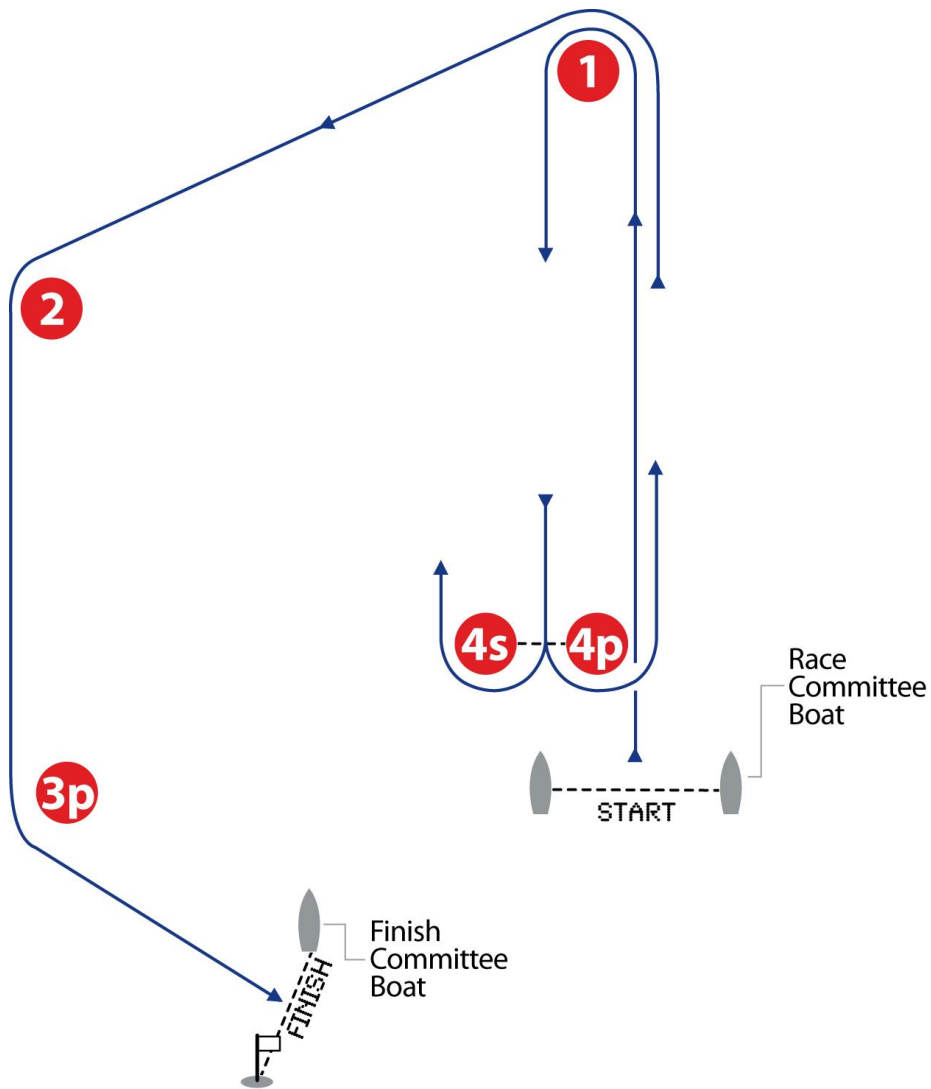
Course Signal	Mark Rounding Order
O1	Start - 1- 2 - 3s/3p - 2 - 3p - Finish
O2	Start - 1- 2 - 3s/3p - 2 - 3s/3p - 2 - 3p - Finish
O3	Start - 1- 2 - 3s/3p - 2 - 3s/3p - 2 - 3s/3p - 2 - 3p - Finish



**Attachment 3 – Course Diagrams**  
**Attachment 3-2**

**Course Trapezoid Inner**

Course Signal	Mark Rounding Order
I1	Start - 1 - 4s/4p - 1 - 2 - 3p - Finish
I2	Start - 1 - 4s/4p - 1 - 4s/4p - 1 - 2 - 3p - Finish
I3	Start - 1 - 4s/4p - 1 - 4s/4p - 1 - 4s/4p - 1 - 2 - 3p - Finish



**Attachment 3 – Course Diagrams**  
**Attachment 3-3**

**Course Windward Leeward**

Course Signal	Mark Rounding Order
W2	Start -1 - 4s/4p - 1 - Finish
W3	Start -1 - 4s/4p - 1 - 4s/4p - 1 - Finish
W4	Start -1 - 4s/4p - 1 - 4s/4p - 1 - 4s/4p - 1 - Finish

